

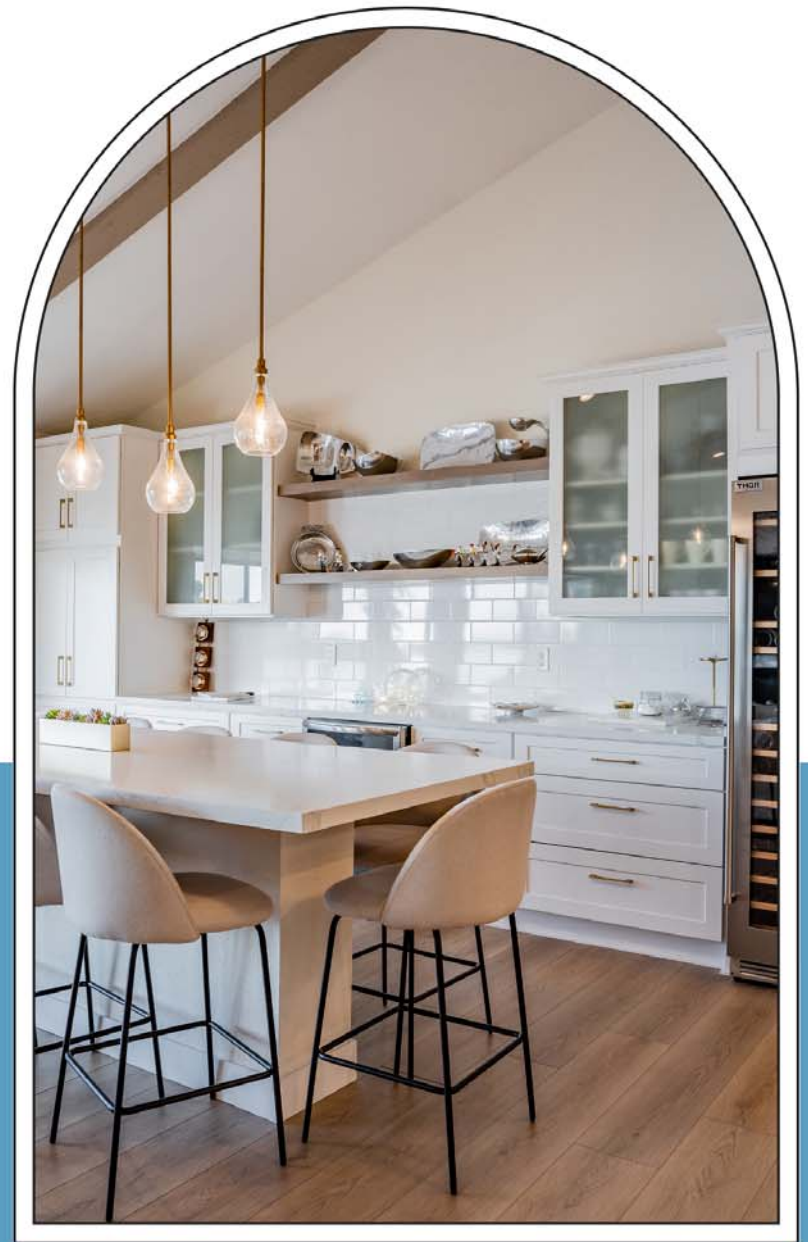


---

*Your* KITCHEN & BATH  
DESIGN CENTER

# TRADE PARTNER PROGRAM

*ECC Team*





# About us.

## Meet ECC Design Team

Sarah and Amanda with over 3 decades combined experience, they found their passion for designing and transforming spaces using their artistic skills, and knowledge to create beautiful yet functional spaces. Together they draw from our client's culture, passions, and life experiences to create a space that does far more than meets functional requirements. Rather, the finished project is an expression of our client's personality and deepest values. From the first meeting to the last, ECC Design process is every bit a collaborative effort to create our clients' vision of their ideal space.

[ELIZABETHCONSTRUCTION.NET](http://ELIZABETHCONSTRUCTION.NET)

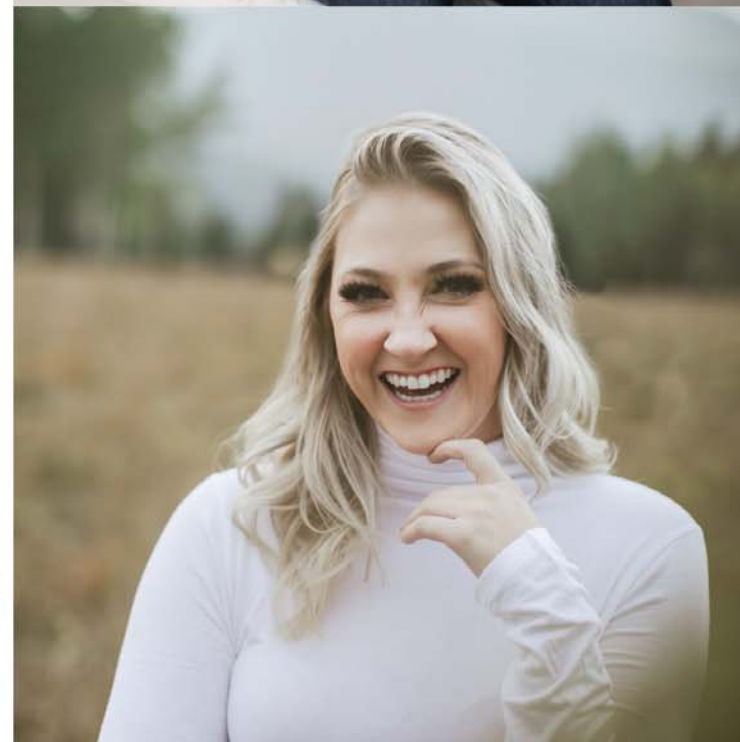
# Imagination and practicality

combine for  
unparalleled results.



ECC works with interior structure and surface, coordinating all of the elements that *make up an interior space.*

from Floor Plans & Elevations, Kitchen Cabinets, Bathroom Vanities & Custom Built-ins, Tile Selections & Drawings, to Plumbing & Lighting, everything that makes up what we call a "total space."





# Services:

## 01 | KITCHEN, BATH & BASEMENT DESIGN

- Floorplans
- Selections
- Elevations
- 3-D Renderings

## 02 | MATERIAL SUPPLIER

- Cabinets
- Countertops
- Tile
- Flooring
- Plumbing
- Lighting

## 03 | REMODELING

- Installation
- Construction Services



# Incentives:



## REFERRAL KICKBACKS

**\$100**

per completed project



**2.5%**

## FOR ANY PROJECT

**LOCKED IN**

and completed

# FLOOR PLANS & DRAWINGS

- Chief Architect
- Home Designer
- AutoCAD
- 20/20
- Sketchup



DATE	
BY	
DESCRIPTION	
SHEET TITLE: BASEMENT & 1st FLOOR	
PROJECT DESCRIPTION: BGC - BASEMENT	



DATE	
BY	
DESCRIPTION	
SHEET TITLE: BASEMENT & 1st FLOOR	
PROJECT DESCRIPTION: BGC - BASEMENT	
DRAWN BY: PROJECT MANAGER:	
CHECKED BY: DATE:	
SCALE: 1/8" = 1'-0"	
SHEET: A-2	





Inspiration Image



Flooring



Door Style



Maple - Sable

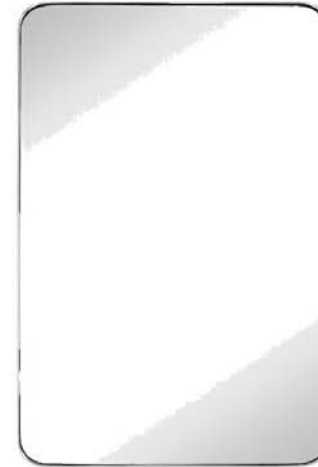
Sink



Pulls



Mirror



Vanity Lighting



Vanity Faucet



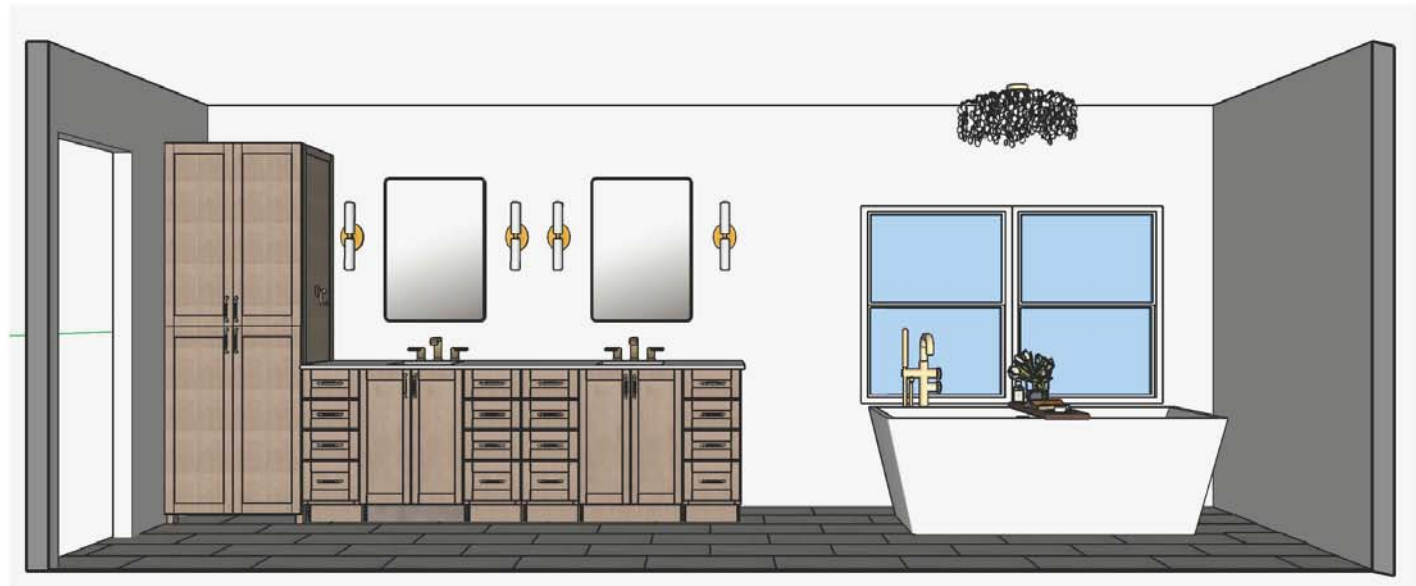
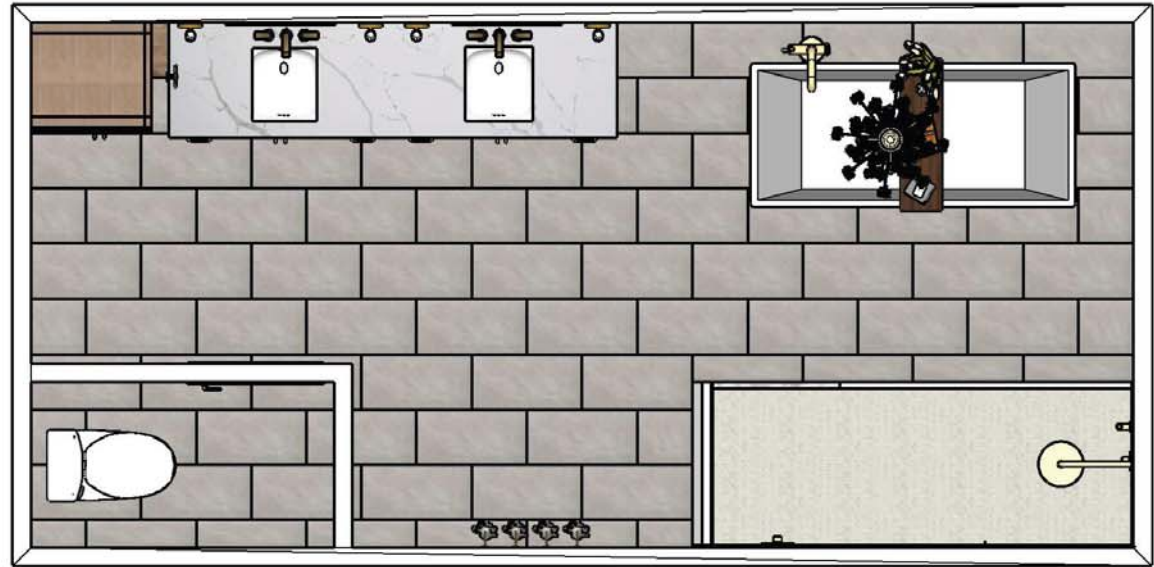
Slab



Bathroom Accessories



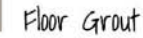
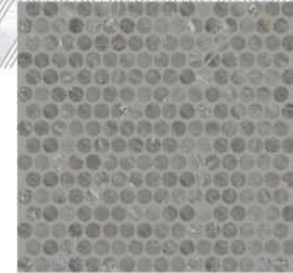
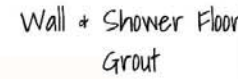




PROJECT

SPECS. *Example*

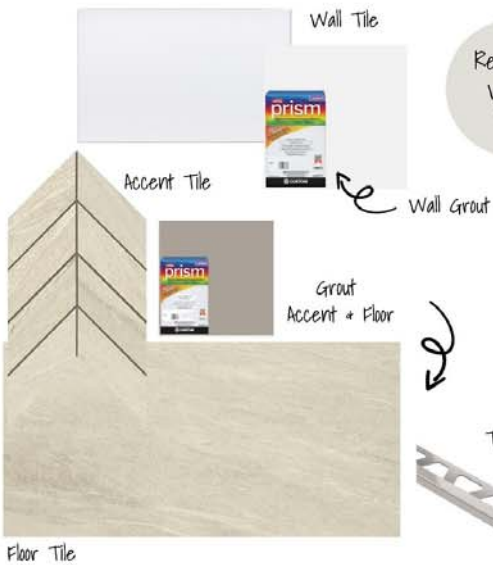
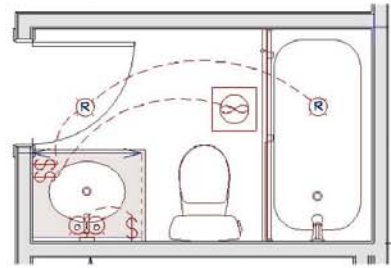
# Master Bathroom



PROJECT

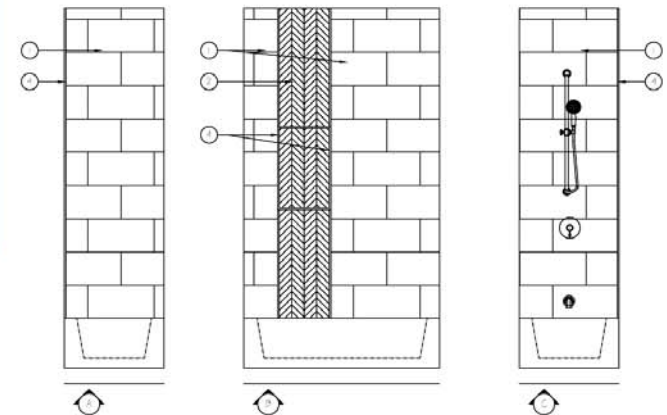
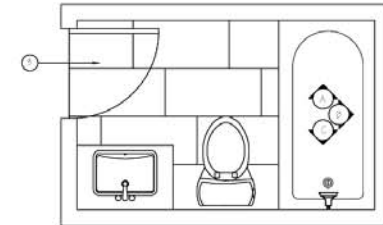
SPECS. *Example*

## Loft Bath



### MATERIAL LEGEND:

- 12\"/>



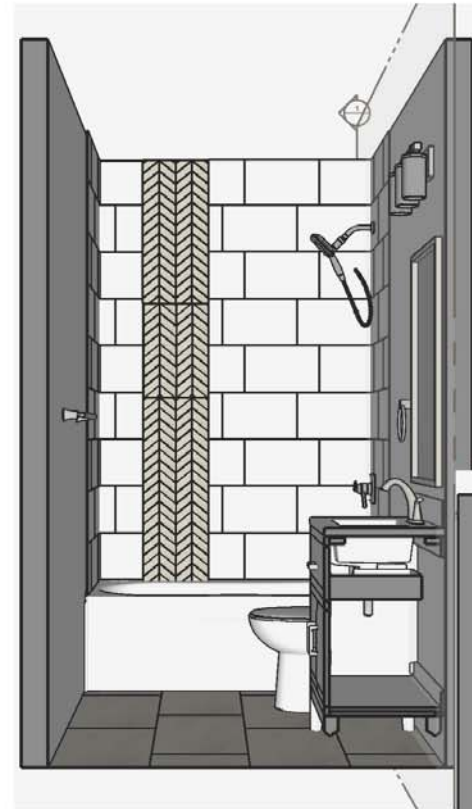
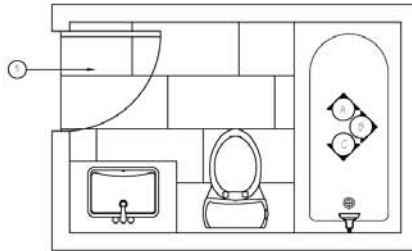
PROJECT

SPECS. *Example*



# MATERIAL LEGEND:

- 10 X 16 - ICE WHITE SUBWAY TILE (OROUT #641 COOL WHITE)
- MONTESSANO GREIGE CHEVRON (OROUT #545 DRIFTWOOD)
- 15 X 30 MONTESSANO GREIGE (OROUT #545 DRIFTWOOD)
- 1/2" JOLLY TBM - BRUSHED NICKEL



PROJECT

SPECS. *Example*

# LET US HELP YOU DESIGN YOU'R CLIENTS DREAM SPACE!

Make sure to follow us  
[@elizabethconstructioncompany](https://www.instagram.com/elizabethconstructioncompany)

## CONTACT US

📞 720-866-7300

✉️ [SARAH@ECCNOW.NET](mailto:SARAH@ECCNOW.NET)

🌐 [ECCNOW.NET](http://ECCNOW.NET)

📷 [@ELIZABETHCONSTRUCTIONCOMPANY](https://www.instagram.com/ELIZABETHCONSTRUCTIONCOMPANY)

*ECC*  
KITCHEN & BATH SHOWROOM

